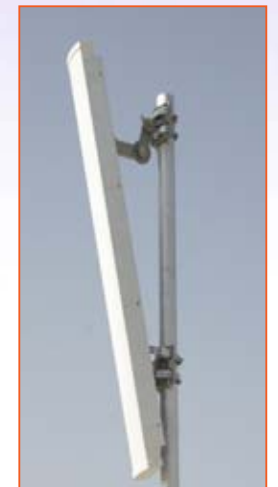


2.4GHz CPE

2.4GHz CPE

Antenna P/N	MT-252003/NV	MT-952018/NV	MT-362010/S	MT-344026/N	MT-364035/N	MT-344020/N	MT-955005/NV	MT-345010/N	MT-344048/ND	MT-344041/N	MT-365010/N	MT-365012/NVH	MT-345017/N	MT-346004/N		
Type	Vehicular	Vehicular	Subscriber	Subscriber	Subscriber	Subscriber	Subscriber	Subscriber	Subscriber	Subscriber	Subscriber	Subscriber	Subscriber	Subscriber		
<b>Electrical</b>																
Frequency Band	GHz	680 - 6000	2.4-5.935	2.3-2.8	2.2-2.7	2.3-2.7	2.15-2.7	2.3 - 2.7	4.9 - 5.875	2.15-2.7	2.3-2.7	2.3-2.7	2.3-2.7	2.4-2.7	2.3-2.7	
Gain	dBi (Min)	4±1	8	11.5 -/+0.5	15	15.5 @ 2.4-2.7	16	16±1	20±0.5	17.5	17 @ 2.3-2.5 18 @ 2.5-2.7	18 @ 2.6-2.7	19	19	20 @ 2.4-2.7	24@ 2.5-2.9
Polarization		Linear Vertical	Vertical	Vertical	Linear V/H	Linear V/H	Linear V/H	Linear Vertical	Linear V/H	Dual Slant ± 45°	Linear V/H	Linear V/H	Dual V+H	Linear V/H	Linear V/H	
Port-to-Port Isolation	dB (Min)	-	-	-	-	-	-	-	-	-18 (-25 typ)	-	-	30	-	-	
AZ/EL BW	Degree	360/40	360/25	80/20	20/20	32/32	20/20	40/18.5	19/9.5	14/14	21/21	20/20	17/17	16/16	15/15	8/10
ETSI EN 302 326-3 V.1.1.2 (2006-03)		N/A	N/A	N/A	DN2	DN3	N/A	DN2	DN2, DN3	DN2-DN4	DN2-DN3	DN3	DN4	DN4	DN4	DN3-DN4
Sidelobe Level	dB (Max)	-	-	-	DN2	DN3 @ 2.4-2.7	-17 -/+1	-10	-	-12	DN2-DN3	DN3	DN4	DN4	DN4	DN3-DN4
Cross Polarization Level	dB (Max)	-	-	-	-18	DN3	-20	-18	-	-26	DN2-DN3	DN3	-20	DN4	DN4	DN3-DN4
Front to Back Ratio	dB (Max)	-	-	-20	-26	DN3	-30	-28	-40	-30	DN2-DN3	-28	-26	-30	DN4	DN3-DN4
VSWR 50 Ohm		<1.8:1	1.8:1	1.5:1	1.7:1	1.7:1	1.5:1	1.8:1	1.9:1	1.5:1	1.7:1	1.7:1	1.8:1	2.0:1	1.6:1	1.7:1
Maximum Input Power	Watt	25	75	6	6	6	6	6	6	6	6	6	6	6	6	10
Additional Features		El. Tilt 20°		Indoor Antenna	Broadband	Broadband	Broadband	Dual Band	Broadband	Dual Slant pol.	Broadband	Broadband	Dual pol.	Broadband	Low Cost	
						Available for IAE*		Isolation = 30db (min)			Available for IAE*		Available for IAE*		Grid Antenna***	
<b>Mechanical</b>																
Size	mm	140x70x92	Ø86 x 50.6	325x92x15	305x305x25	190x190x30	371x371x40	305x305x15	450x450x36	305x305x15	305x305x25	371x371x40	370x370x40	450x450x36	905x705x354	
Weight	Kg (Max)	0.5	0.15	0.6	1.5	0.5	2	1.2	3	1.2	1.2	2	2.5	3	3.3	
Connector		N-Type Female	N-Type Female	SMA Female	N-Type Female	N-Type Female	N-Type Female	2x N-Type Female	N-Type Female	2xN-Type Female	N-Type Female	N-Type Female	2xN-Type Female	N-Type Female	N-Type F	
Mounting Kit			Included	Stand Alone	MT-120018	MT-120018/A	MT-120018	MT-120018	MT-120018	MT-120018	MT-120018	MT-120018	MT-120018	MT-120018	Included	



**Key Features**

- High-Quality Low-Cost
- Lightweight antenna with easy installation
- Low profile
- Various configurations such as standalone, integrated or internal component
- Narrow and broad band
- Meets ETSI electrical and environmental requirements

**Benefits**

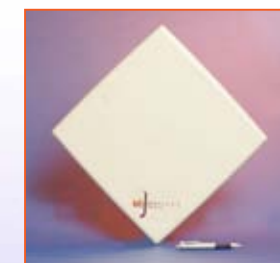
- Provides High performance Low Cost subscriber
- Reduces the cost of installation
- Maintains real estate aesthetic look and value
- Generates low wind load

**Environmental**

- Temperature Range -45 to +70 degree per IEC 68
- Vibration Random 4M3 per IEC 60721
- Mechanical Shock 4M3 per IEC 60721
- Humidity 95% per ETSI EN300
- Water Tightness Per IEC 529 IP67 (IP52 for some BTS antennas)
- Salt Spray 500 hours per IEC 64
- Solar Radiation 1000 hours per ASTM G53
- Ice and Snow 25mm Radial
- Wind Speed 160 Kmph Operation/220 Kmph
- Survival
- Flammability UL-94HB

**Notes**

- All specifications are subject to change without notice
- Preliminary specs are for antennas under development
- Upon request MTI may provide the complete spec controlled document for specific antenna



## 2.4GHz BTS

Antenna P/N	MT-344030/NV	MT-344087/NVH	MT-344029/NV	MT-364029/NV	MT-364034/NH	MT-364054/ND	MT-344075/ND	MT-343018/NV	MT-343018/NH	MT-363010/VN	MT-363010/HN	MT-364036/NH	MT-344027/NV	MT-364028/VN	MT-363024/ND	MT-364064/ND	MT-344031/NV	MT-344036/NV			
Type	Base Station	Base Station	Base Station	Base Station	Base Station	Base Station	Base Station	Base Station	Base Station	Base Station	Base Station	Base Station	Base Station	Base Station	Base Station	Base Station	Base Station	Base Station	Base Station		
<b>Electrical</b>		Preliminary																			
Frequency Band	GHz	2.4-2.5	2.3-2.7	2.4-2.5	2.3-2.7	2.3-2.7	2.3-2.7	2.3-2.7	2.4-2.5	2.4-2.5	2.4-2.7	2.4-2.7	2.3-2.7	2.4-2.5	2.4-2.7	2.3-2.7	2.3-2.7	2.4-2.5		2.0-2.7	
Gain	dBi (Min)	14	15	17 ±0.5	17 ±0.5	16.5 (@ 2.4-2.5)	17.5 ± 0.5 @ 2.5-2.7	17 ± 1 @ 2.5-2.7	13	13 ±0.5	13	13	15.5 (@2.5-2.7)	17	17	12±0.5	16.5	13	15.5-17.5	13.5-16	13-15
Polarization		Vertical	Vertical	Vertical	Vertical	Horizontal	Dual Slant ± 45°	Double Dual Slant ± 45°	Vertical	Horizontal	Vertical	Horizontal	Horizontal	Vertical	Vertical	Dual Linear, ±45°	Dual Slant ± 45°	Vertical		Vertical	
Port-to-Port Isolation	dB (Min)						23	23								20	23				
AZ/EL BW	Degree	60/19	60/12	60/6	60/8.5@2.4-2.7GHz	60/7.5	65/7	65/7	90/15	90/13	90/13	90/13	90/8	90/5.5	90/5	90/16 (120@-6dB)	90/7	120/11	60/7	90/7	120/7
ETSI EN 302 326-3 V.1.1.2 (2006-03)		N/A	SS	N/A	N/A	SS	SS	SS	SS	N/A	N/A	N/A	N/A	N/A	N/A	N/A	SS	SS			SS
Sidelobe Level	dB (Max)	-21 @ ±90 Deg	SS	-19 @ ±90 Deg	-30 @±90 Deg	SS	SS	SS	-25 @ -/+135 Deg	-27 @ -/+135 Deg	-30 @ -/+135 Deg	-25 @ -/+135 Deg	-28 @ -/+135 Deg	-32 @±135 Deg	-30 @ -/+135 Deg	-15	SS	SS			SS
Cross Polarization Level	dB (Max)	-18	SS	-20	-20	SS	-17@2.5-2.7	-15	-19	-20	-25	-22	SS	-20	-20	-15	-15	SS			SS
Front to Back Ratio	dB (Max)	-30	SS	-30	-35	SS	-30	-30	-30	-30	-25	SS	-32	-30	-30	SS	SS				SS
VSWR 50 Ohm		1.7:1	1.5:1	1.7:1	1.7:1	1.7:1 (@2.5-2.7)	1.5:1	1.5:1	1.7:1	1.5:1	1.7:1	1.5:1	1.7:1	1.7:1	1.7:1	1.7:1	1.5:1	1.7:1			1.7:1
Maximum Input Power	Watt	6	6	6	6	10	20	20	6	6	6	6	20	6	6	20	20	10			20
Additional Features		ISM Only		ISM Only	Broadband	Broadband	Dual Slant	Double Dual Slant	ISM Only	ISM Only	Broadband	Broadband	Broadband	ISM Only	Broadband High Gain	Dual Slant	Dual Slant Mechanical Down Tilt	ISM Only			Broadband
Installer selectable beam width 60°/90°/120°																					
<b>Mechanical</b>																					
Size	mm	350x150x30	500x200x30	1050x128x28	720x390x28	925x270x58	945 x 126 x 37	920 x 300 x 68	500x200x30	500x200x30	508x330x30	508x330x30	925x270x53	1232x330x28	1232x330x30	500x200x30	1100x210x65	500x200x30	905x130x114	905x130x98	905x130x74
Weight	Kg (Max)		1.2	1.5	2.5	4	4	3	3.7	1.5	1.5	3	4	5.5	5.5	1.5	5.5	1.5			2.3
Connector		N-Type Female	2xN-Type Female	N-Type Female	N-Type Female	N-Type Female	2xN-Type Female	4xN-Type Female	N-Type Female	N-Type Female	N-Type Female	N-Type Female	N-Type Female	N-Type Female	N-Type Female	2 N-Type Female	2xN-Type Female	N-Type Female			N-Type Female
Mounting Kit		MT-120019	MT-120025	MT-120021	MT-120019	MT-120021	MT-120021/A	MT-120021/A	MT-120019	MT-120019	MT-120019	MT-120019	MT-120021	MT-120021	MT-120021	MT-120025	MT-120021/A	MT-120019			MT-120021

## 2.4GHz Omni

Antenna P/N	MT-341018/N/A	MT-951031/NV/B				MT-341019/N/A	MT-342025/NV	MT-952015/N/A		MT-951031/NV/A		MT-362022/NV	MT-361007/NV/A	MT-952021/NV/A		MT-341017/N/A	MT-342032/NV/A	MT-362017/NV	MT-342020/NV	MT-343013/N	
Type	Omni	Omni				Omni	Omni	Omni		Omni		Omni	Omni	Omni		Omni	Omni	Omni	Omni	Omni	Omni
<b>Electrical</b>		Preliminary																			
Frequency Band	GHz	2.4-2.5	2.4 - 2.5	4.94 - 4.99	5.15 - 5.925	2.4-2.5	2.4-2.5	2.4-2.5 & 5.47-5.875	2.4 - 2.5	4.94 - 4.99	2.3-2.7	2.5-2.7	2.4 - 2.5	4.9-5.9	2.4-2.5	2.4-2.5	2.3-2.7	2.4-2.5	2.4-2.5	2.4-2.5	
Gain	dBi (Min)	4	4	7	8	5.5	6.5	5dBi @ 2.4-2.5 6.5dBi @ 5.47-5.875	5	6	7	7	7	9	7.25	7.3 ±0.75	8	9	12 -/+1		
Polarization		Vertical	Linear Vertical			Vertical	Vertical	Vertical	Linear Vertical		Linear Vertical	Linear Vertical	Linear Vertical	Vertical	Vertical	Vertical	Vertical	Vertical	Vertical	Vertical	
AZ/EL BW	Degree	360/45	360/40	360/15	360/13	360/32	360/25	360/25 @ 2.4-2.5 360/13 @ 5.47-5.875	360/25	360/15	360/17	360/20	360/13.5	360/7	360/21	360/20	360/8	360/11	360/5.1		
ETSI EN 302 326-3 V.1.1.2 (2006-03)		N/A	N/A			N/A	N/A	N/A	N/A	N/A	N/A	N/A	N/A	N/A	N/A	N/A	N/A	N/A	N/A	N/A	
Sidelobe Level	dB (Max)						-9	-10 EL Plane			N/A						N/A	-11 EL Plane	-10 EL Plane		
Cross Polarization Level	dB (Max)																-9				
Front to Back Ratio	dB (Max)	N/A				N/A	N/A	N/A			N/A	N/A			N/A	N/A			N/A	N/A	
VSWR 50 Ohm		1.7:1	2:1			1.7:1	1.5:1	2:1	2:1	2:1	2:1	2:1	2:1	2:1	1.5:1	1.5:1	1.7 :1	1.5:1	1.5:1		
Maximum Input Power	Watt	6	6			6	4	6	6	6	10	6	6	6	6	6	4	6	6		
Additional Features			Triple Band			*	*	*		Dual Band					Dual Band	*	9 deg down tilt				
<b>Mechanical</b>																					
Size	mm	165xØ28	265xØ28			255xØ28	320xØ16	260xØ28	260xØ28	410xØ28	340xØ28	460xØ28	337xØ28	404xØ28	830xØ45	733xØ30	1400xØ30				
Weight	Kg (Max)	0.2	0.2			0.2	0.1	0.2	0.2	0.7	0.2	0.3	0.15	0.15	0.5	0.7	1				
Connector		N-Type Male	N-Type Female			N-Type Male	N-Type Female	N-Type Male	N-Type Male	N-Type Male	N-Type Male	N-Type Male	N-Type Male	N-Type Male	N-Type Female	N-Type Female	N-Type Female				
Mounting Kit		N/A	N/A			N/A	Included	N/A	N/A	Included	Included	N/A	N/A	N/A	Included	Included	Included				